

Product No: VMC300**Product Name: Small 5 Axis CNC Machine Center**

Архангельск (8182)63-90-72
 Астана (7172)727-132
 Астрахань (8512)99-46-04
 Барнаул (3852)73-04-60
 Белгород (4722)40-23-64
 Брянск (4832)59-03-52
 Владивосток (423)249-28-31
 Волгоград (844)278-03-48
 Вологда (8172)26-41-59
 Воронеж (473)204-51-73
 Екатеринбург (343)384-55-89

Иваново (4932)77-34-06
 Ижевск (3412)26-03-58
 Казань (843)206-01-48
 Калининград (4012)72-03-81
 Калуга (4842)92-23-67
 Кемерово (3842)65-04-62
 Киров (8332)68-02-04
 Краснодар (861)203-40-90
 Красноярск (391)204-63-61
 Курск (4712)77-13-04
 Липецк (4742)52-20-81

Магнитогорск (3519)55-03-13
 Москва (495)268-04-70
 Мурманск (8152)59-64-93
 Набережные Челны (8552)20-53-41
 Нижний Новгород (831)429-08-12
 Новокузнецк (3843)20-46-81
 Новосибирск (383)227-86-73
 Омск (3812)21-46-40
 Орел (4862)44-53-42
 Оренбург (3532)37-68-04
 Пенза (8412)22-31-16

Пермь (342)205-81-47
 Ростов-на-Дону (863)308-18-15
 Рязань (4912)46-61-64
 Самара (846)206-03-16
 Санкт-Петербург (812)309-46-40
 Саратов (845)249-38-78
 Севастополь (8692)22-31-93
 Симферополь (3652)67-13-56
 Смоленск (4812)29-41-54
 Сочи (862)225-72-31
 Ставрополь (8652)20-65-13

Сургут (3462)77-98-35
 Тверь (4822)63-31-35
 Томск (3822)98-41-53
 Т ула (4872)74-02-29
 Тюмень (3452)66-21-18
 Ульяновск (8422)24-23-59
 Уфа (347)229-48-12
 Хабаровск (4212)92-98-04
 Челябинск (351)202-03-61
 Череповец (8202)49-02-64
 Ярославль (4852)69-52-93

Киргизия (996)312-96-26-47 Казахстан (772)734-952-31 Т аджикистан (992)427-82-92-69

Features

- (1). High performance 5 axis CNC center machine controller.
- (2). The standard spec includes electronic hand wheel.
- (3). Selection of high -quality casting materials, more compact.
- (4). 4 tools ATC.ISO20 spindle type, 24000rpm spindle speed.
- (5). USB/U dis/RS232COM etc many kinds of communication mode, to help users achieve different data transmission and software upgrades easily.
- (6). Frequency conversion water cooling motor, low noise, high speed and good durability.
- (7). Perfect self diagnosis function, internal and external status real-time display, alarm immediately when abnormal.
- (8). Macro variable, macro definition programming, realizing a variety of logical relations. Support macro program with parameters, convenient to the user programming.
- (9). DXF+G code template function, converting DXF automatically to G code for processing.
- (10). Graphic simulation function: show the graphics of the processing program and the tool path of the actual operation, tool path simulation processing without controlling the operation of the machine , to exam if the preparation process is correct.
- (11). Multi interface selection: support multi language interface display, automatic fault alarm. Processing information display, processing time, the number.
- (12). Parameter tabular: Input / output address number setting, only need to fill in the corresponding value in the configuration table.
- (13).Applicable industry: technology development, advertising design, art, ocational technical college Education & Training CNC and DIY enthusiasts.

Technical parameters	
X axis travel	300mm
Y axis travel	175mm
Z axis travel	270mm
4th axis Travel	A axis:+30° to -120°
5th axis Travel	±infinity
Spindle taper	ISO 20
Tool number	8
Pneumatic supply	0.6 MPa
Tool DIA. range	1-12mm
Standard Size Collet	1mm- 12mm
Control system	5 axis CNC center machine controller
Instruction	DXF+G code template function, converting DXF automatically to G code for processing
MPG hand wheel	5 axis
Spindle Power	1.5kw
Spindle speed	100-24000rpm
Motor Type	XYZ axis AC Servo, AB axis Stepper

Rapid movement in X /Y/Z Axis	1-8000mm/min
Feed rate in X/Y/Z Axis	1-4000mm/min
Power of X/Y/Z Axis	AC Servo 750W
Power of A/B Axis	0.8Nm
Positioning accuracy	0.03mm
Repeatability accuracy	0.02mm
Transmission	ball screw
Table size	450*160mm
Number of T-slots	3
Width of T-slot	12mm
Table structure	Full cast iron
Power	230VAC / 110VAC
Weight(NW/GW)	500/550kg
Overall dimension	1360*990*1800mm
Packing size	1400*1050*2000mm

Product No: XK200

Product Name: Mini CNC Milling





Features

- (1). High performance 4 axis milling CNC controller.
- (2). The standard spec includes electronic hand wheel.
- (3). Selection of high -quality casting materials, more compact.
- (4). X, Y, Z, A four axis micron level interpolation accuracy controlling;
- (5). USB/U dis/RS232COM etc many kinds of communication mode, to help users achieve different data transmission and software upgrades easily.
- (6). Network interface, supporting for remote monitoring and DNC file transfer processing
- (7). Perfect self diagnosis function, internal and external status real-time display, alarm immediately when abnormal.
- (8). Macro variable, macro definition programming, realizing a variety of logical relations. Support macro program with parameters ,convenient to the user programming
- (9). DXF+G code template function, converting DXF automatically to G code for processing.
- (10). With the automatic aligning instrument.
- (11). Teaching function: Teaching+ simplified instruction programming, teaching methods in table format, that is simple and intuitive.
- (12). Graphic simulation function: show the graphics of the processing program and the tool

path of the actual operation, tool path simulation processing without controlling the operation of the machine , to exam if the preparation process is correct.

(13). Multi interface selection: support multi language interface display, automatic fault alarm. Processing information display, processing time, the number.

(14).Parameter tabular: Input / output address number setting, only need to fill in the corresponding value in the configuration table.

(15).7 inch super large colorful(800*480) LCD screen.

(16).Applicable industry: technology development, advertising design, art, ocational technical college Education & Training CNC and DIY enthusiasts.

Technical parameters	
X axis travel	210mm
Y axis travel	95mm
Z axis travel	200mm
Tool DIA. range	2-12mm
Control system	Adtech 4640 CNC controller
Instruction	DXF+G code template function, converting DXF automatically to G code for processing
MPG hand wheel	4 axis
Spindle motor	1.5kw
Spindle speed	100-24000r/min
The max moving speed	1200mm/min
The max feeding speed	500mm/min
Power of X	1.35 Nm
Power of Y/Z	2.2Nm
Positioning accuracy	0.03mm
Repeatability accuracy	0.02mm
Transmission	ball screw
Table size	390*92mm
T slot (amount*width)	38*12mm
Max. load	30kg
Table structure	Full cast iron
Power	220VAC / 110VAC
Weight(NW/GW)	140/160kg
Overall dimension	845*580*850mm
Packing size	930*650*1100m

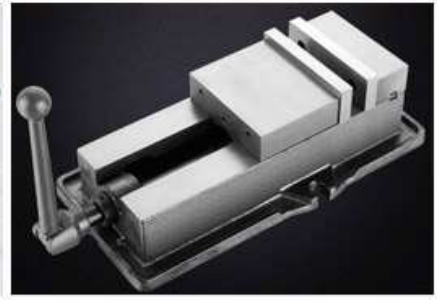
Optional Accessories



ER16 Collet



Clamping kit



Quick vice



Carbide end mill 5 pieces set



Flutes Hss end mill



Antimagnetic edge finder

Product No: XK300

Product Name: Micro CNC Milling







Features

- (1). Milling CNC machine tools based entirely on the design and manufacture, reflects the structural integrity of facilitate future design ideas
- (2). High performance 4 axis cnc milling controller, Optional siemens 808D or GSK980MDc cnc controller.
- (3). ARM 9 CPU+FPGA, Ethernet network interface, Support B macro function, PLC function, Mutil-language library function.
- (4). USB and RS232 port, DNC function of USB.
- (5). The standard spec includes MPG hand wheel.
- (6). By MPG hand wheel convenient electronic control of each axis of movement.
- (7). Selection of high -quality casting materials, more compact.
- (8). A collection of double-nut ball screw, bearings and couplings with high precision positioning, while adding an automatic oil lubrication system, to protect your machine precision, extended service life.

- (10). Safety electrical components of high quality and fast plug.
- (11). Pre-installed fourth axis fast interface.
- (12). With sink and nozzles.
- (13). Applicable industry: technology development, advertising design, art, vocational technical college Education & Training CNC and DIY enthusiasts.

Technical parameters	
X axis travel	300mm
Y axis travel	175mm
Z axis travel	270mm
Table size	450*160mm
Spindle taper	MT3/R8
Tool DIA. range	4-16mm
T slot (amount*width)	3*12mm*43mm
Positioning accuracy	0.03mm
Repeatability accuracy	0.02mm
Control system	Yornew980MC,Optional siemens 808D or GSK980MDc cnc controller
Instruction	DXF+G code template function, converting DXF automatically to G code for processing
MPG hand wheel	4 axis
Spindle motor	1100W(1.5kw optional)
Spindle speed	100-3500r/min(24000r/min optional)
The max moving speed	2500mm/min
The max feeding speed	1500mm/min
Power of X/Y	4Nm/400W
Power of Z	6Nm/750W
Transmission	ball screw
Max. load	40kg
Table structure	Full cast iron
Power	220VAC / 110VAC
Weight(NW/GW)	300/350kg
Overall dimension	900*950*1750mm
Packing size	1100*1040*2000mm

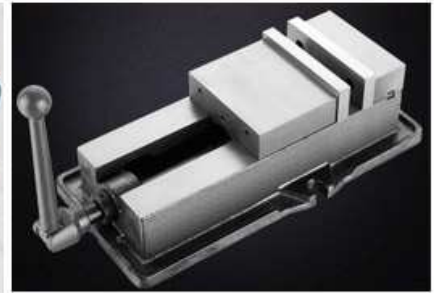
Optional Accessories



Mill chuck set



Clamping kit



Quick vice



Carbide end mill 5 pieces set



Fluted Hss end mill 4-16mm



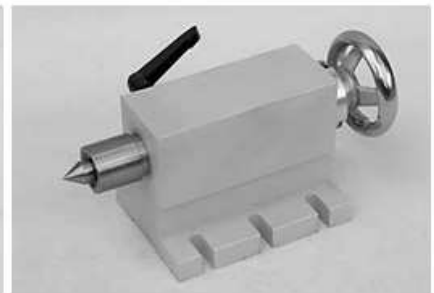
Indexable carbide end mill MT3



Antimagnetic edge finder



The 4th axis



Tailstock for the 4th axis

Product No: CK210**Product Name: Mini CNC Lathe**

Bench Top CNC

Small CNC Lathe

Although the machines are smaller than a production machine, the same principles, methods and calculations apply. This one of the major appeals of bench top machining in an educational setting, students are able to learn machining principles without the need of a full machine shop. The machines are also much less expensive than their production grade counterparts, which makes them suitable for a new machinist or hobbyist.

- ↑ 可放桌上
- 🛡️ 全封闭设计
- 🔌 使用220V电压
- 📱 专业系统
- ⚙️ 可加工金属



Features

- (1).Automatic 4 positions tool post.
- (2).With sink and nozzles.
- (3).High performance 2 axis CNC lathe controller, Optional siemens 808D or GSK980TB3 CNC controller..
- (4). ARM 9 CPU+FPGA, Ethernet network interface, Support B macro function, PLC function, Mutil-language library function..
- (5).Lathe CNC machine tools based entirely on the design and manufacture, reflects the structural integrity of facilitate future design ideas.
- (6). The standard spec includes MPG hand wheel.
- (7). USB and RS232 port, DNC function of USB.
- (8). Network interface, supporting for remote monitoring and DNC file transfer processing.
- (9). Control speed of G code.
- (10). Selection of high -quality casting materials, more compact.
- (11). A collection of double-nut ball screw, bearings and couplings with high precision positioning, while adding an automatic oil lubrication system, to protect your machine precision, extended service life.
- (12). 220VAC or 110VAC single-phase AC power supply.
- (13). Safety electrical components of high quality.
- (14). Auto power off when door open.
- (15). Applicable industry: technology development, advertising design, art, ocational technical college Education & Training CNC and DIY enthusiasts.

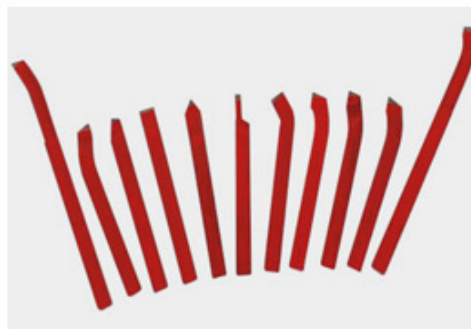
Technical parameters	
Turning diameter over bed(max)	210mm
Chuck diameter	100mm
Spindle speed	100-1750r/min(control speed of G code)
Spindle through-hole	20mm
Spindle mount	MT3
Spindle motor power	500W
X travel	80mm
Z travel	290mm
The max moving speed	1500mm/min

The max feeding speed	1000mm/min
Control system	Yorne980TB,Optional siemens 808D or GSK980TB3 cnc controller
Instruction	DXF+G code template function, converting DXF automatically to G code for processing
MPG hand wheel	4 axis
Tool position	4
Tool dimension	10*10mm
Tailstock taper	MT2
Tailstock sleeve diameter	20mm
Travel of tailstock	25mm
Positioning accuracy:	0.015mm
Repeatability accuracy	0.02mm
Power	220VAC / 110VAC
Weight(NW/GW)	180/200KG
Overall dimension	1000*580*680mm
Packing size	1100*700*610mm

Optional Accessories



Cutter set
(tips replacement)8x8 mm



Cutter 11 pieces set



4-jaw chuck
(independent) with flange



Rolling center



Tailstock chuck

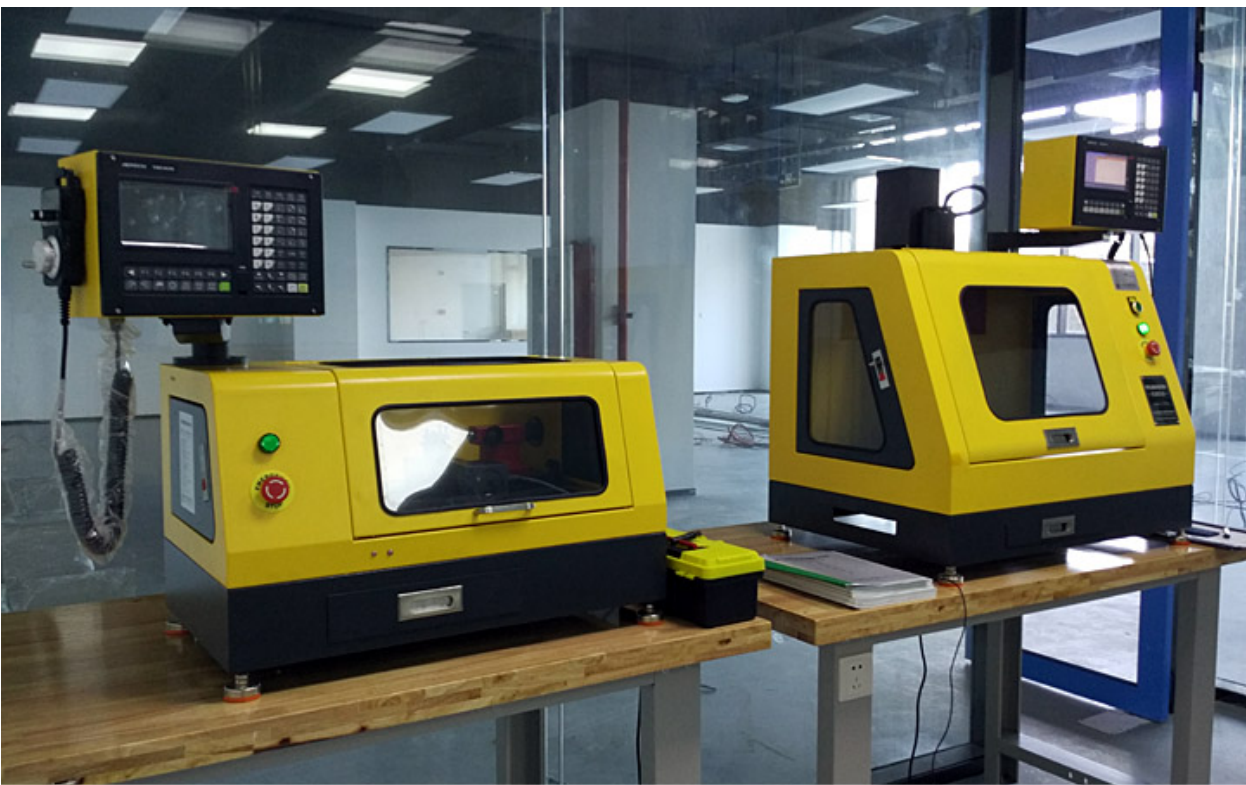
Gallery





Product No: CK140

Product Name: Mini CNC Lathe



Features

- (1).Lathe CNC machine tools based entirely on the design and manufacture, reflects the structural integrity of facilitate future design ideas
- (2).High performance 2 axis CNC lathe controller.
- (3).USB/U dis/RS232COM etc many kinds of communication mode, to help users achieve different data transmission and software upgrades easily.
- (4).Network interface, supporting for remote monitoring and DNC file transfer processing.
- (5).Perfect self diagnosis function, internal and external status real-time display, alarm immediately when abnormal.
- (6).Macro variable, macro definition programming, realizing a variety of logical relations. Support macro program with parameters , convenient to the user programming.
- (7).DXF+G code template function, converting DXF automatically to G code for processing.
- (8).Teaching function: Teaching+ simplified instruction programming, teaching methods in table format, that is simple and intuitive.
- (9).Graphic simulation function: show the graphics of the processing program and the tool path of the actual operation, tool path simulation processing without controlling the operation of the machine , to exam if the preparation process is correct.
- (10).Multi interface selection: support multi language interface display, automatic fault alarm. Processing information display, processing time, the number.
- (11).Parameter tabular: Input / output address number setting, only need to fill in the corresponding value in the configuration table.
- (12).7 inch super large colorful(800*480) LCD screen.
- (13).Control speed of G code.
- (14).Selection of high -quality casting materials, more compact.
- (15).A collection of double-nut ball screw, bearings and couplings with high precision positioning.
- (16). 220VAC / 110VAC single-phase AC power supply.
- (17).Safety electrical components of high quality.
- (18).Manual tool post.
- (19).Auto power off when door open.
- (20).Applicable industry: technology development, advertising design, art, ocational technical college Education & Training CNC and DIY enthusiasts.

Technical parameters	
Turning diameter over bed(max)	140mm
Travel across slide	75mm
Chuck diameter	80mm
Spindle speed	100-2000r/min(control speed of G code)
Spindle through-hole	11mm
Spindle mount	MT2
Spindle motor power	150W
X travel	70mm
Z travel	160mm
The max moving speed	2000mm/min
The max feeding speed	1000mm/min

Control system	Adtech 4620,Optional siemens 808D or GSK980TB3 cnc controller
Instruction	DXF+G code template function, converting DXF automatically to G code for processin
Tool dimension	8x8mm
Tailstock taper	MT1
Tailstock sleeve diameter	20mm
Travel of tailstock	25mm
Positioning accuracy	0.02mm
Repeatability accuracy	0.02mm
Power	220VAC / 110VAC
Weight(NW/GW)	50/65KG
Overall dimension	750*450*450mm
Packing size	850*470*470mm

Optional Accessories



Cutter set
(tips replacement)8x8 mm



Cutter 11 pieces set



4-jaw chuck
(independent) with flange



Архангельск (8182)63-90-72
Астана (7172)727-132
Астрахань (8512)99-46-04
Барнаул (3852)73-04-60
Белгород (4722)40-23-64
Брянск (4832)59-03-52
Владивосток (423)249-28-31
Волгоград (844)278-03-48
Вологда (8172)26-41-59
Воронеж (473)204-51-73
Екатеринбург (343)384-55-89

Иваново (4932)77-34-06
Ижевск (3412)26-03-58
Казань (843)206-01-48
Калининград (4012)72-03-81
Калуга (4842)92-23-67
Кемерово (3842)65-04-62
Киров (8332)68-02-04
Краснодар (861)203-40-90
Красноярск (391)204-63-61
Курск (4712)77-13-04
Липецк (4742)52-20-81

Магнитогорск (3519)55-03-13
Москва (495)268-04-70
Мурманск (8152)59-64-93
Набережные Челны (8552)20-53-41
Нижний Новгород (831)429-08-12
Новокузнецк (3843)20-46-81
Новосибирск (383)227-86-73
Омск (3812)21-46-40
Орел (4862)44-53-42
Оренбург (3532)37-68-04
Пенза (8412)22-31-16

Пермь (342)205-81-47
Ростов-на-Дону (863)308-18-15
Рязань (4912)46-61-64
Самара (846)206-03-16
Санкт-Петербург (812)309-46-40
Саратов (845)249-38-78
Севастополь (8692)22-31-93
Симферополь (3652)67-13-56
Смоленск (4812)29-41-54
Сочи (862)225-72-31
Ставрополь (8652)20-65-13

Сургут (3462)77-98-35
Тверь (4822)63-31-35
Томск (3822)98-41-53
Тула (4872)74-02-29
Тюмень (3452)66-21-18
Ульяновск (8422)24-23-59
Уфа (347)229-48-12
Хабаровск (4212)92-98-04
Челябинск (351)202-03-61
Череповец (8202)49-02-64
Ярославль (4852)69-52-93

Киргизия (996)312-96-26-47 Казакстан (772)734-952-31 Т аджикистан (992)427-82-92-69